

GREY EYE Advanced Mini UAV & MAVS

- ★ Ideal for providing frontline troops with increased situational awareness
- ★ Easy to deploy
- ★ Designed for fully autonomous operations from Launch to Mission Execution and Recovery
- ★ Equipped with interchangeable payloads
- ★ Features are : Gyro stabilized Electro Optic Zoom camera, Gyro stabilized Day / Night camera & Thermal camera
- ★ Synthetic Aperture Radar (SAR) Grey Eye can be operated in all weather, day and night operations and capable of rapid deployment

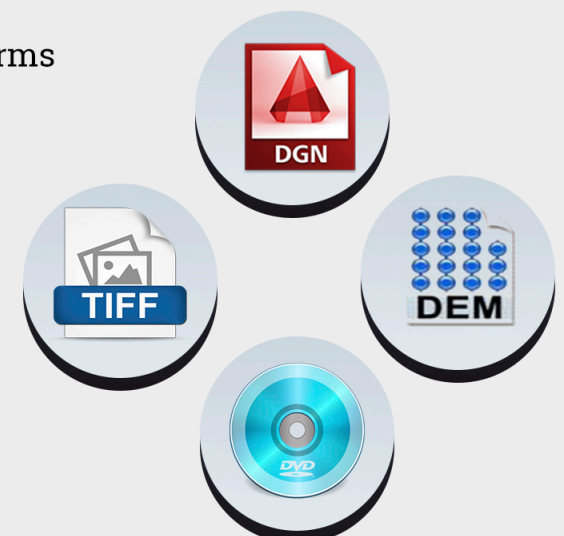


AUTOPILOT Miniature Autopilot For Mini-UAV & MAVS

- ✿ The miniature autopilot weighs less than 60 grams
- ✿ It has an on board accelerometers, rate gyros, GPS and pressure sensors for speed and altitude to provide stabilization, altitude reference, altitude and speed hold functions besides autonomous waypoint navigation
- ✿ The autopilot has manual takeover switch on the RC transmitter that allows the ground safety pilot to take control of the UAV
- ✿ The autopilot code is validated using Matlab/Simulink
- ✿ Large code can be automatically generated using real time workshop
- ✿ This approach allows rapid development of autopilot algorithms for new platforms

GROUND CONTROL STATION (GCS)

- ✿ Displays flight parameters of UAV, Critical Signal indications, Video telemetry, Object Tracking, GIS for waypoint navigation
- ✿ GCS can render wide variety of vector and raster file formats like DGN, DVD, geoTIFF, DTED, DEM, Google maps Autopilot commands, Control loop gains
Waypoints can be altered from the GCS on the fly
- ✿ The GCS software is a cross platform application, it is scalable and could be adapted or modified to meet specific requirements

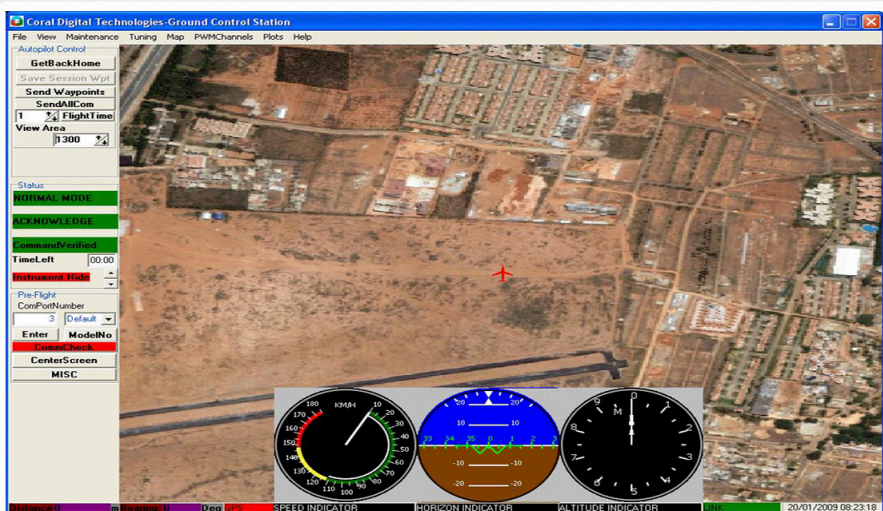


APPLICATION

- * Army, Border Security, Police
- * Law Enforcement
- * Search and Rescue (SAR)
- * Border and Maritime Patrol
- * Surveillance and Reconnaissance
- * Scientific Research
- * Sports Events
- * Monitoring & Survey
- * Commercial Aerial Surveillance
- * Oil, Gas and Mineral Exploration & Production
- * Agro, Mining

TARGET GROUPS

- * Police
- * Government & Military
- * Research Institutes
- * Universities
- * Media
- * Fire Fighters



AUTOPILOT FEATURES

- * Rugged aluminum casing
- * External reset button
- * Normal and power saving mode.
- * Voice port for two voice communication
- * LED to indicate GPS and power status
- * Firewall updated via configuration software and via server.
- * Internal Geo-fence in the device (Circle or polygon fence)
- * Simple and easy to use Configuration software with Plug and use USB interface.

Payload Options

- * Electro Optic Camera with 40x Zoom
- * Radiation detection and Environmental payload
- * Three Axis Retractable Stabilized Gimbal with Electro Optic Camera Stabilization
- * Communication Repeater Payload

PARAMETERS

Wing Span	:	2.95m
Length	:	2.26m
Wing Area	:	1.1Sq.mts
Engine	:	3W-56i-DA110
Propeller	:	22*10-23*12
Takeoff Weight (without payload)	:	22Kgs
Max Takeoff weight	:	35Kgs
Max Flying Altitude	:	5000 mts
Max Payload	:	13Kgs
Max Speed (with full payload)	:	110Km/Hr
Takeoff distance (with full payload)	:	130Km/Hr
Standard Flight Speed	:	150 Km/Hr
High Climbing Speed	:	8mts/Sec
Fuel Tank capacity	:	8Lts
Flying Time	:	6 Hrs
Range	:	>20Km

Video Downlink

- * Analog Downlink
- * Digital Downlink COFDM

Telemetry Datalink

- * FULL Duplex Digital Datalink

